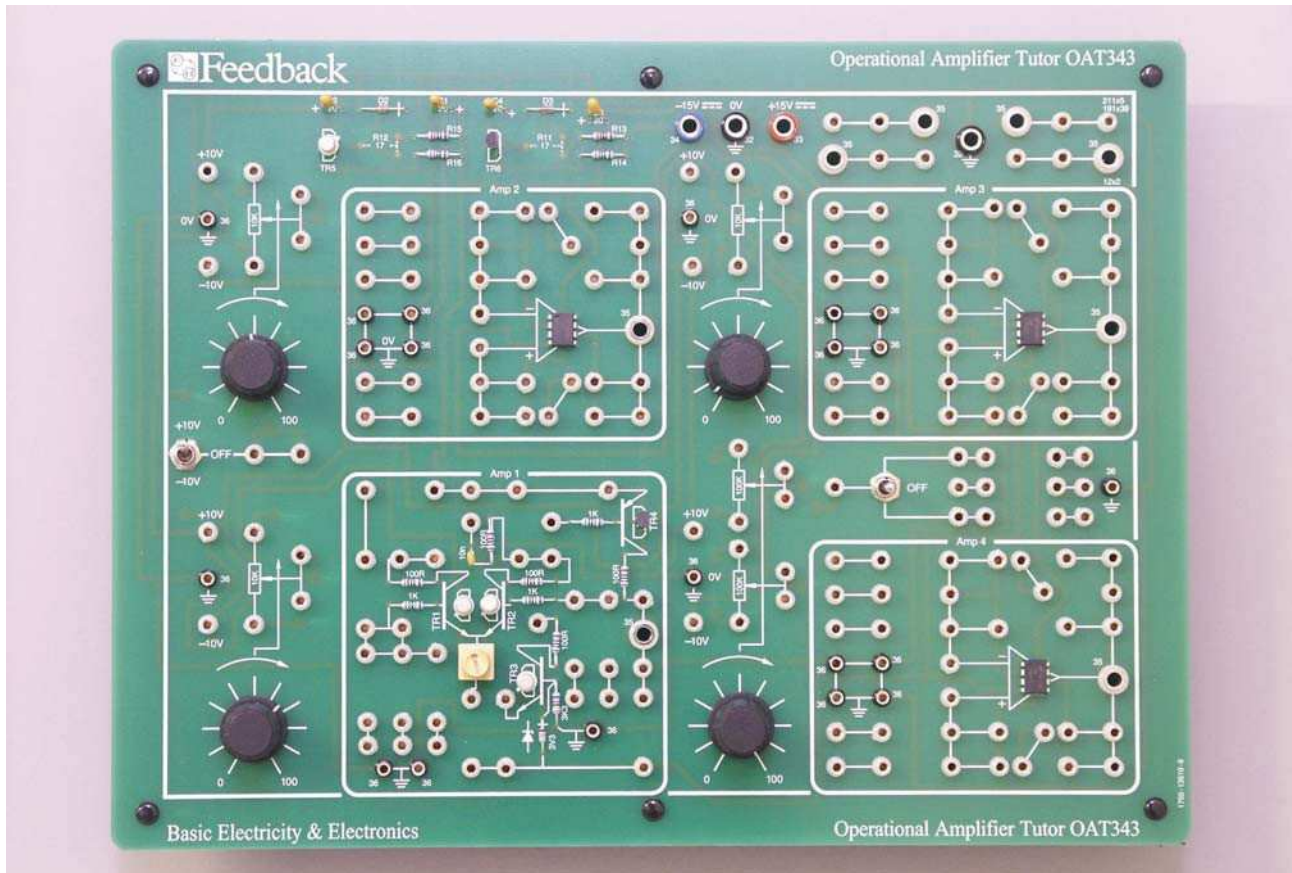


Operational Amplifier Trainer

OAT343



Description

The OAT343 is an open board style Operational Amplifier Tutor. It features four operational amplifiers, one of which is constructed with discrete components, enabling work to be carried out on the internal make up of an Op Amp. The comprehensive manual provided with the equipment discusses work in the following areas:

- Operational Amplifier feedback requirements
- Input offset voltage
- Slewing rate
- Frequency response
- Common mode rejection ratio

A full range of practical work is provided in the thirteen assignments covering the following topics:

- Operational Amplifier characteristics
- Inverting & non-inverting modes
- Open loop voltage gain
- Common mode rejection ratio (CMRR)
- Sign changer or inverter
- Scale changer
- Adder or summing amplifier
- d.c. voltage follower
- Differential d.c. amplifier
- Analogue integration and differentiation
- Linear & Non-linear oscillators

The system is provided complete with all connecting leads and requires a ± 15 V d.c. power supply. The 01-100 or PS445 power supplies from the Feedback range are recommended for this purpose. The only other items of ancillary equipment required are an oscilloscope, multimeter and a function generator; Feedback FG601 is recommended. The tutor is styled in the usual Feedback open-board fashion and can be easily housed in System Storage Rack SSR1000.

Features

- Open board construction
- Four operational amplifiers
- A selection of resistive & capacitive feedback components
- On-board potentiometers
- Complete with manual and interconnecting leads

Specification

Operational Amplifiers	3 Type 741 general purpose, with inverting and non-inverting inputs. 1 Discrete component amplifier with differential input, balance control, constant current source and output amplifier.	
Scaling	3 Single gang 10 k Ω potentiometers. 1 Dual gang 100 k Ω potentiometer.	
Connections	All on-board circuit connections by 2 mm sockets and stackable leads. Amplifier outputs and power supply connections by 4 mm sockets. 4 sets of 4 mm - 2 mm transfer sockets.	
Switches	2 three-position switches, one dedicated to the supply of ± 10 V.	
Power Outputs	4 sets of 0 V, ± 10 V sockets.	
Power requirements	0 V, ± 15 V d.c. regulated at 200 mA.	
Dimensions & Weight	Width: 295 mm (11.6 in) Depth: 220 mm (8.7 in)	Height: 44 mm (1.75 in) Weight: 1.8 kg (4 lb).
Tender Specification	An open-board operational amplifier tutor providing three IC Op Amps, one discrete amplifier, ± 10 V switchable supply, scaling potentiometers and all connecting leads. Front panel mimic diagram showing elements and circuitry. Complete with student assignment manual containing at least 13 assignments	
Ordering Information	Operational Amplifier Tutor dc Power Supply Power Supply System Storage Rack	OAT343 01-100 PS445 SSR1000



Feedback Instruments

5 & 6 Warren Court
Park Road, Crowborough
East Sussex; TN6 2QX
United Kingdom
Tel: +44 1892 653322
Sales: sales@feedback-instruments.com
Website: www.feedback-instruments.com

For further information on Feedback equipment please contact ...

Feedback reserves the right to change these specifications without notice